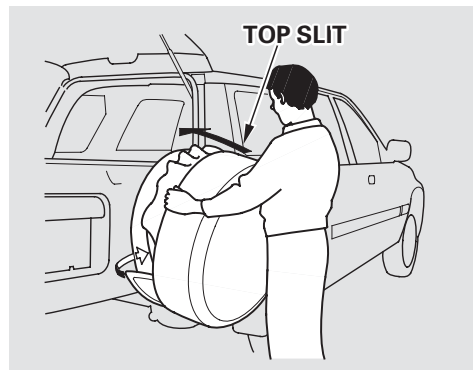
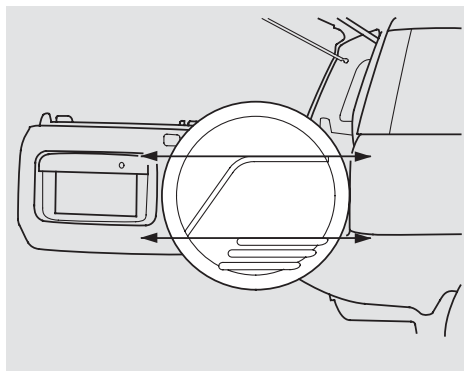


Changing a Flat Tire

Hard type spare tire cover *On SE model*

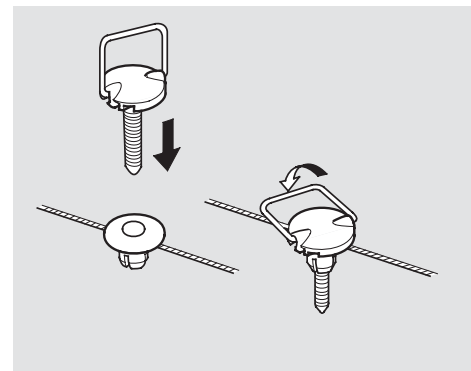


32. Hold the cover, then place the bottom of it over the spare tire.



33. Make sure the cover is horizontal. If needed, move the cover left or right until the cover is horizontal.

34. Zip the cover closed and fasten the magic tape.



35. Replace the cargo storage bin. Secure it with the four clips. Push each clip down securely, and pivot the ring down flat.

36. Unhook the cargo area floor and lower it. Replace the cargo area carpet.